

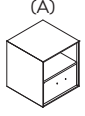

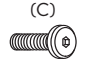
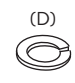
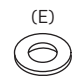
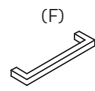
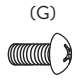
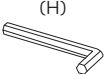


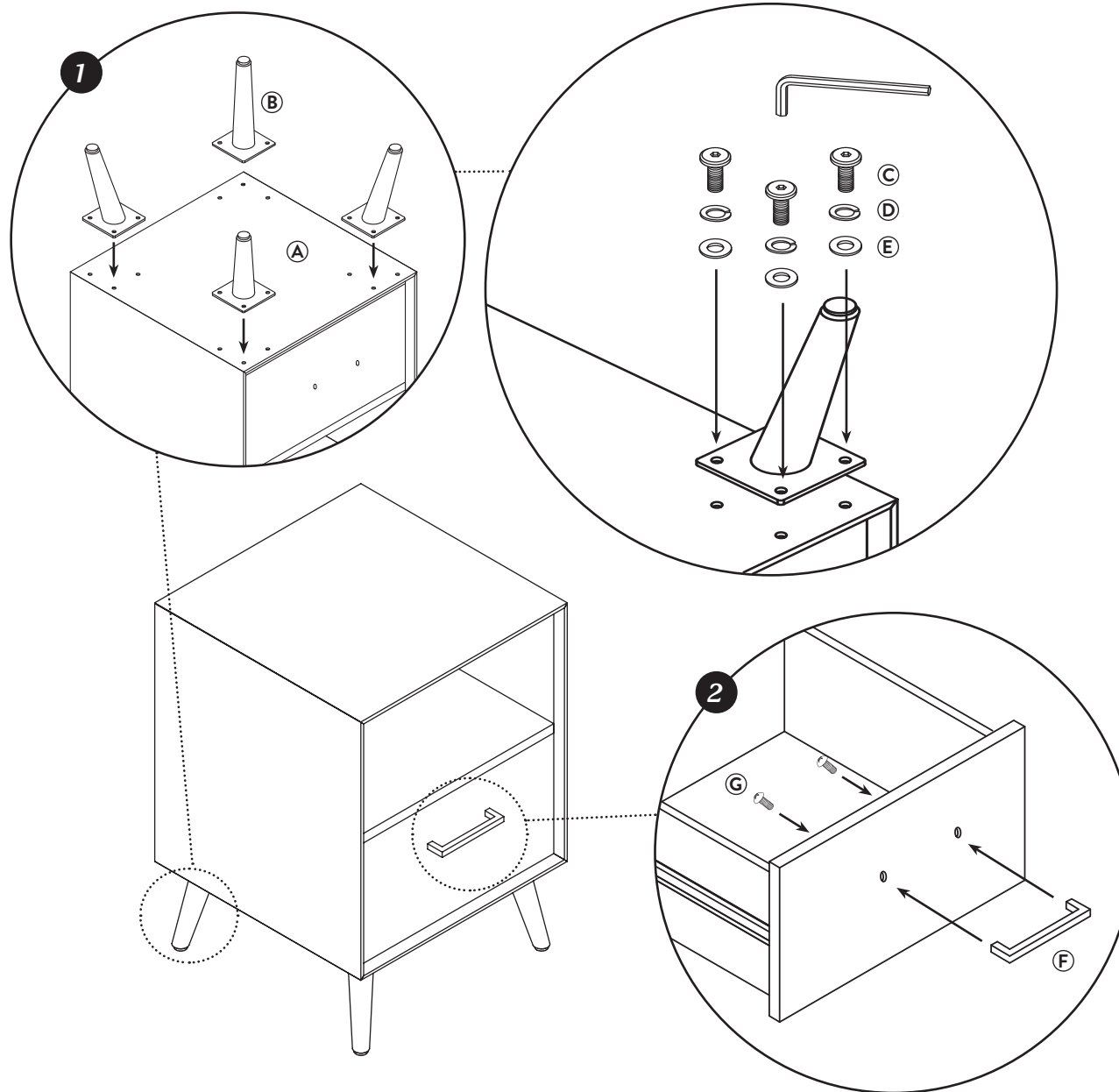
# Nightstand Assembly

SKUS: 1360400, 1360407

**NEED HELP?**  
1-800-444-8444  
warranty@rizehome.com

## INCLUDED PARTS

- Drawer Section  
1 pcs 
- Legs  
4 pcs 
- 1/4 x 20mm Bolts  
12 pcs 
- Lock Washer  
12 pcs 
- Flat Washer  
12 pcs 
- Handle  
1 pcs 
- Pan-Head Bolts  
2 pcs 
- Allen Wrench  
1 pcs 



1. Place the Drawer Section (A) upside down. Align each Leg (B) and attach them using a Flat Washer (E), followed by a Lock Washer (D), and 1/4 x 20mm Bolts (C). Tighten the Bolts with an Allen Wrench (H).
2. Carefully turn the nightstand upright. Pull out the drawer and attach the the Handle (F) using the Pan-Head Bolts (G) with a screwdriver. Slide the drawer back in until it clicks into place.

Your nightstand is now fully assembled!